



## BASIC WATER PURIFICATION SYSTEM

BBPS-401 BBPS-403

# INDEX

1. Preface	2
2. Specification	2
3. Water Flow Chart	3
4. Working Environments	4
5. Installation	5
5.1 Preparation for installation	5
5.2 Tube and adapter's connection	5
5.3 Installation steps	6
6. Usage Guide	9
6.1 Starting Up	10
6.2 Getting Corresponding Pure Water	10
6.3 Standby	10
6.4 Shutdown	11
6.5 The Usage to Keep High Quality Pure Water	11
7. Water Quality Test	12
8. Consumables	12
9. Normal Trouble Diagnosis	13
10. Warranty & Repair Regulation	14

# 1. Preface

Dear customer, in the beginning, we sincerely thanks for your choosing our water purification system. This water purification system has incorporated new cutting-edge technology. It is installed and used easily, and can provide you with RO water and ultrapure water for science research. So, it will benefit your work.

For the water purification system's maximum efficiency, it is suggested that the user manual should be read before installation. Any question in the installation process, please contact our technology engineers or dealers.

# 2. Specification

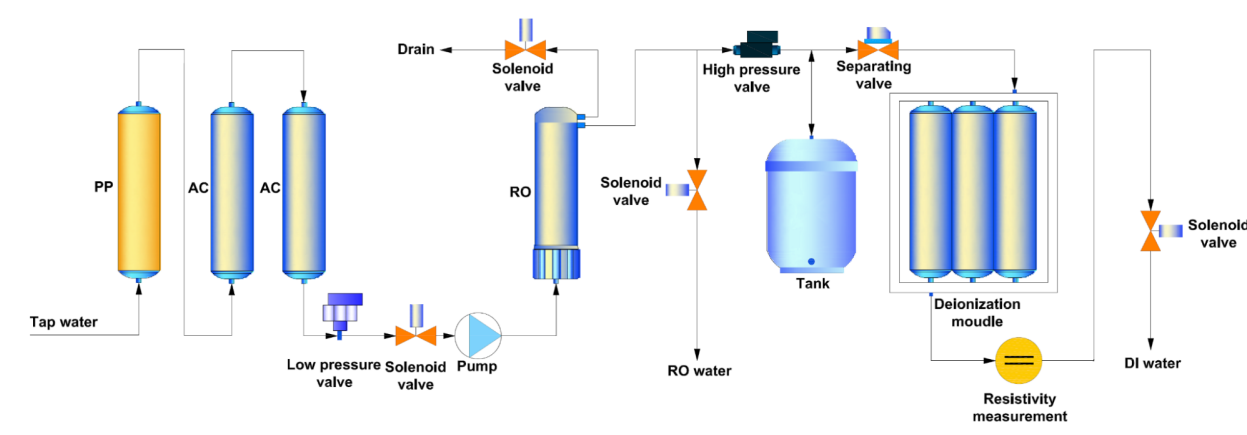
Model	BBPS-401	BBPS-403
Output(25°C)*	15Liters/hour*	30Liters/hour*
Flow rate	Up to 2 liters/minute (with pressure tank)	
Pure water outlet	2: reverse osmosis water, deionized water	
Deionized water quality		
Resistivity	15-18.2MΩ.cm	
Bacteria	N/A	
Particles (>0.1μm)	N/A	
RO water quality		
Ion rejection rate	97-99%(with new RO membrane)	
Organics rejection rate	>99% (when MW>200 Dalton)	
Particles and bacteria rejection rate	>99%	
Feed water requirements	Tap water, temperature:5-45°C,pressure:1.0-4.0Kgf/cm <sup>2</sup>	
Dimension and weight	Length×Width×Height:410×220×420mm / Weight: about 18Kg	
Electrical requirements	AC100-240V, 50/60Hz	
Power	72W	
Standard configuration	Main body (Including 1 set of cartridge)+15 liters pressure tank+TDS/conductivity test pen	
Purification System		
Sequence number	Specification	Quantity/set
LV.1	Special spun fiber cartridge	1(Q15)
	5μm spun PP cartridge	1(Q30)
LV.2	Special active carbon block cartridge	1

LV.3	15 Series: 100GPD RO membrane	1
LV.4	30 Series: 200GPD RO membrane	
		Mixed bed resin cartridge

Remarks:

- The value will be influenced by temperature and feed water's quality.

### 3. Water Flow Chart



### 4. Working Environments

- Inlet water: Tap water (TDS<200ppm will be suggested).  
If inlet water TDS>200ppm, pretreatment is recommended. Water with higher TDS will affect the quality of outlet water and life of purification cartridge.
  - Work temperature: 5-45°C
  - Pressure: 1.0-4.0Kgf/cm<sup>2</sup>
  - Power: AC100-240,50/60Hz,72W
- 【Clean, dry working environments would be suggested!】

# 5. Installation

## 5.1 Preparation for installation

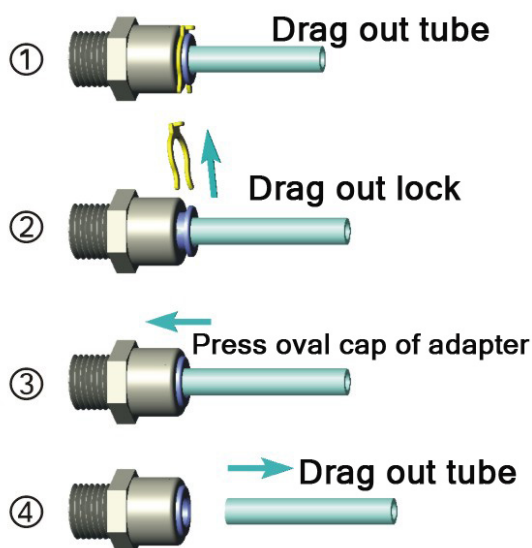
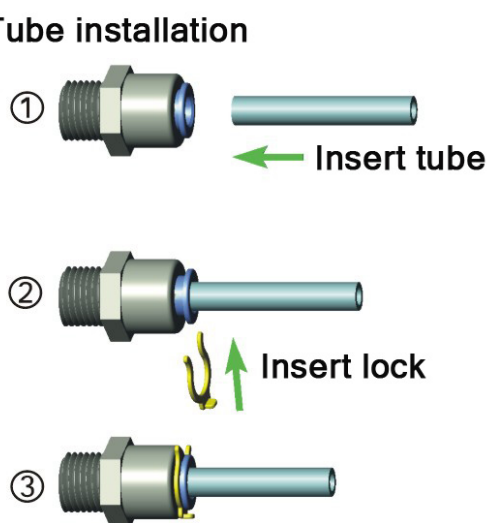
- The purification system should be installed horizontally and near to tap.

## 5.2 Tube and adapter's connection

The adapter of the machine is high quality easy-put adapter. And material of tube is high quality's PE.

Tube installation and drag diagram

### Tube installation



### ATTENTION:

- The tube should be cut with special tube cutter for rounded cut section. And rounded cut section should be guaranteed as much as possible with other cut tools.
- Connect the tube-press the oval cap of the interface strongly, then insert the tube to the bottom of adapter.
- Take off the tube-press the oval cap of the interface strongly, then drag out the tube. Do not drag when the tube can't be dragged out any more.
- The fore-end of the tube, which has been inserted to adapter, should be cut, when it will be used again.
- Sufficient PTFE thread seal tape should be used in all the threaded joints for water leakage inhibitor or preventing.

## 5.3 Installation steps

Open the packing-case, take out main body, accessory box, water tank (optional). Take out adapters and tube from accessory box, and read the Instruction Manual carefully. External interface are on the back of machine, and it is labeled with different color's label. Moreover, its adapters are inserted with different color's stop plug.



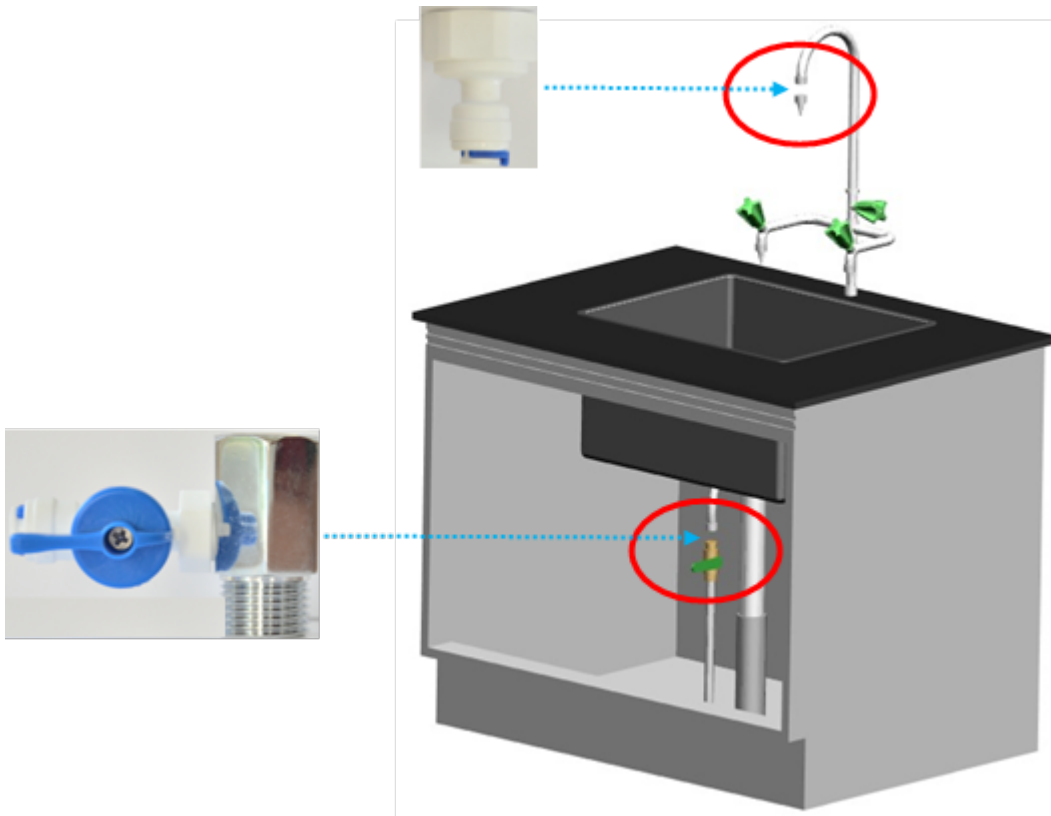
ATTENTION:

Stop plug should be pulled out before the following steps.

### 4. Connect To Tap Water

There are two ways to connect to the tap.

Guide Chart of 2 Ways to Connect To The Tap



1,2, is the place where the interface of machine's inlet water should be connected.

- 1 st way-with tap water adapter 1(1/2"internal thread to 1/4"fast-plug) to connect to tap water.

#### 1. Step: connect tap water adapter 1 to water source

Close the valve of the gooseneck. Dismantle the faucet of gooseneck. Screw tap water adapter 1 into the external thread of gooseneck.

#### 2. Step: connect tap water adapter 1 to interface of machine's inlet water

Use 1/4" PE tube with a suitable length. Insert one side into the interface of tap water adapter 1, and insert the other into the interface with blue label marked "To inlet water" at the back of machine.

- 2 nd way-with tap water adapter 2(tee joint and 1/4"ball valve) to connect to tap water.

Step: connect tap water adapter 2 to water source

Close the chief valve of tap water. Dismantle the tap.

Screw the 1/4" ball valve with external thread into the side thread with internal thread of tee joint.

Screw the tap into the internal thread at one end of the tee joint, and at last, screw the other end with external thread of the tee joint(with 1/4" ball valve and the tap at this time) into the internal thread of the tube, where the tap has been connected.



ATTENTION:

- Sufficient PTFE thread seal tape should be used in all the threaded joints for water leakage inhibitor or preventing

Step: connect tap water adapter 2(1/4"ball valve) to interface of machine's inlet water

Use 1/4" PE tube with a suitable length. Insert one side into the interface of 1/4"ball valve, and insert the other into the interface with blue label marked "To inlet water" at the back of machine.



ATTENTION:

- Extra pretreatment filters (optional) should be connected between the water source and main body.

5. Connect To RO Wastewater

Use 1/4" PE tube with a suitable length. Insert one side into the interface with black label marked "To drain" at the back of machine, and the other side is directed to drain. (DO NOT JAM!!)

6. Connect To Water Tank:

Screw the plastic ball valve onto interface with external thread, which is on the top of pressure tank.

Use 1/4" PE tube with a suitable length. Insert one side into the interface with yellow label marked "To water tank" at the back of machine, and insert the other into the plastic ball valve.

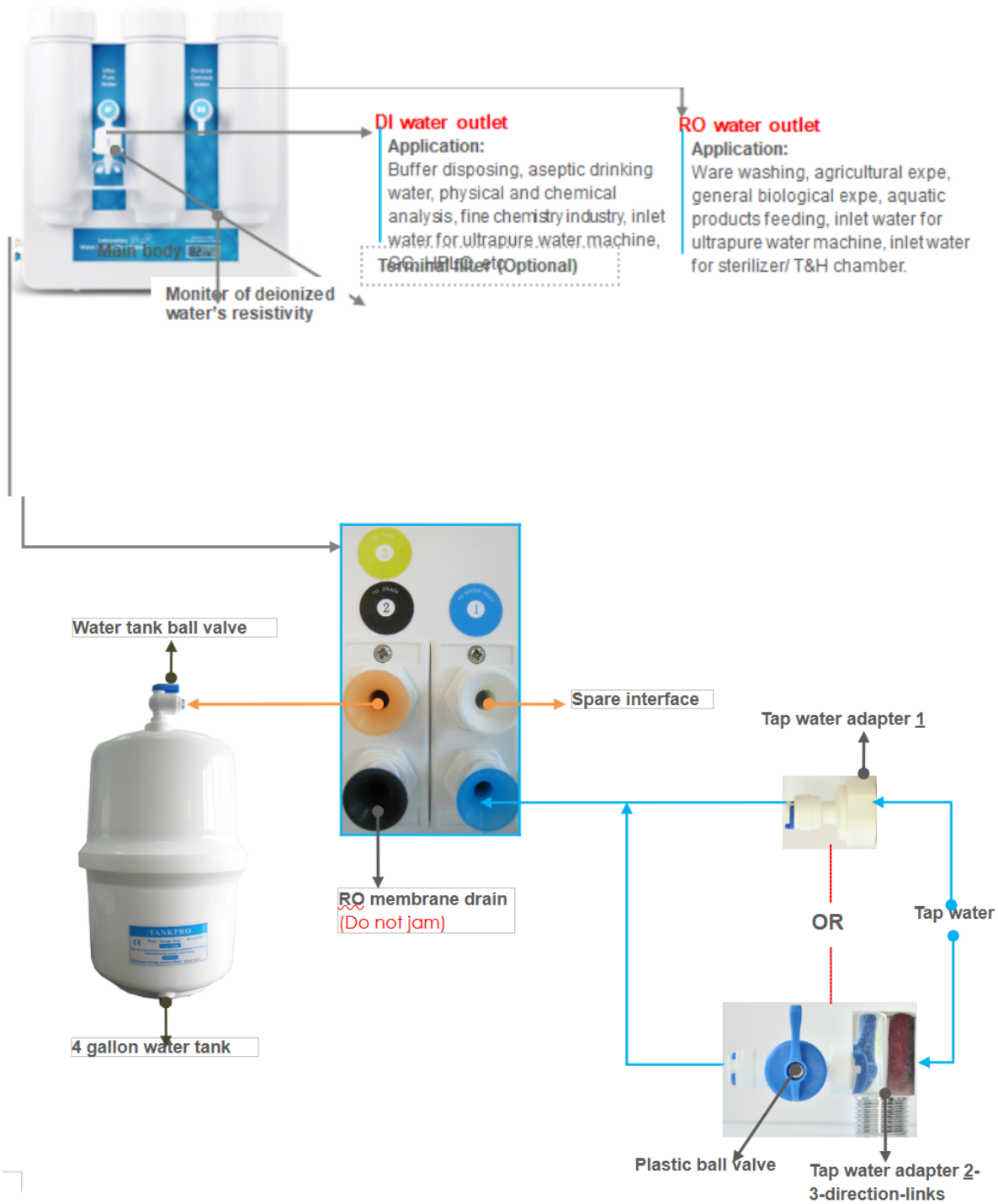


ATTENTION:

- The ball valve on the top of the tank should be open all the time except for maintenance.

Thus the installation is OK.

Installation Guide Chart





# 6. Usage Guide

All data have been set in the factory.

The machine will operate smoothly without any data-setting and debugging.

- The power switch is on the side of the shell. Specific picture is as follows:



## 6.1 Starting Up

Turn on the tap water valve insert the power line into the power source and turn on the power switch then the system begins to produce pure water.

## 6.2 Getting Corresponding Pure Water

Press “RO” or “DI” buttons, which are on the Water outlet, to get corresponding RO water or deionized water (higher quality water than RO water).

## 6.3 Standby

When RO water and ultrapure water is not for use, the system will be in standby state. The system still produce RO water to store in the water tank(optional). Until tank is full, the system will automatically stop. The system will begin to produce pure water again when any pure water is used.

## 6.4 Shutdown

Turn off the tap water valve and turn off the power switch. Then it is ok.



ATTENTION:

- Make sure that the source water and power source is not connected, when the system is not in the use state for long time (for example, off duty).

## 6.5 The Usage to Keep High Quality Pure Water

1. The pure water is easily polluted by surrounding environment. So getting fresh pure water is suggested.
2. Keep water tank from sunlight for microbe's reproducing.
3. When get high pure water, initial high pure water is suggested to drain to get steady pure water.
4. Avoid air bubble when get pure water to reduce air pollution.



### ATTENTION:

- The microbe's reproducing will reduce the life of cartridge, when the machine does not work for long time. So the machine's work every 7-10days is necessary.

## 7. Water Quality Test

The system has 2 method of water quality measuring.

- One method is On-line resistivity monitor, which is used to monitoring DI water's quality.  
Measure unit: Resistivity (MΩ.cm)
- The other is TDS/Conductivity pen. which is used to testing reverse osmosis water and tap water's quality.  
Measure unit: TDS(total dissolved solid, ppm) or conductivity(μs/cm)

### REMARKS:

- Under normal conditions, new RO membrane's desalination rate is above 95%. It means that TDS of RO water should be less than TDS of inlet tap water×5%.
- If TDS of RO water > TDS of inlet tap water×10%, it means that RO membrane's desalination can't meet the minimum requirements. RO membrane should be replaced at once.
- Conversion relations between TDS and conductivity rate(μs/cm):  
If TDS<50ppm, conductivity rate (μs/cm) ≈TDS×2  
If TDS>200ppm, conductivity rate (μs/cm) ≈TDS×(1.5~1.7).

## 8. Consumables

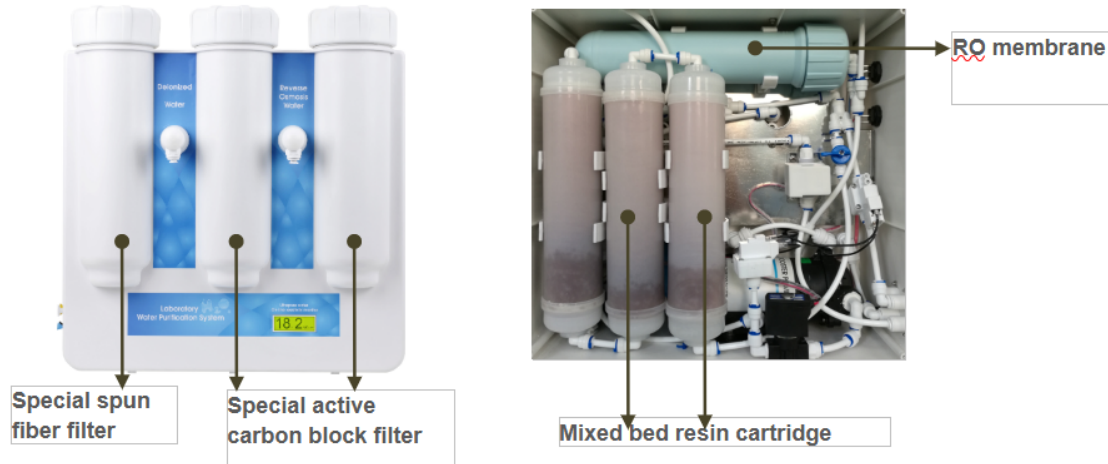
Item No.	Specification	Suggested replacement term
PC-PP-ZK	Special spun fiber cartridge	About 2-6 months
PC-M-PP	5μm spun PP cartridge	About 2-6 months
PC-AC-B-ZK	Special active carbon block cartridge	About 4-6 months
RO-100GP D	100GPD RO membrane	About 12-24 months
RO-200GP D	200GPD RO membrane	About 12-24 months

PTC-MBR-M	Mixed bed resin cartridge	About 1000 liters pure water/pc
-----------	---------------------------	---------------------------------

**REMARKS:**

- Worse inlet feed water quality or big dosage will reduce cartridge life.

Consumables guide chart



## 9. Normal Trouble Diagnosis

Normal trouble	Cause	Diagnosis
No power	-No plug in -Power adapter broken	-Check the power connecting -Replace new adapter
No pure water goes out or a little amount of pure water	-Valve of pure water outlet broken -Pump broken -Cartridges or filters' life ends	-Replace new valve -Replace new pump -Replace new cartridges or filters
Cartridges' life warns	-Cartridges' life ends	-Replace new cartridges
Water leakage	-Adapter or something broken	-Check, insert and drag out again, replace
Water quality deteriorate	-Cartridges or filters' life ends -Water quality sensor broken	-Replace new cartridges or filters -Replace new water quality sensor

- All other matters not mentioned herein, please contact us directly.

# 10. Warranty & Repair Regulation

The products enjoy repair service since the day of purchase. In one year from the purchasing day, we are obliged to replace components for customers free of charge, due to non-human-behavior factors, except for:

- (1). All the consumables;
- (2). Damage caused by maloperation or use in abnormal situations;
- (3). Disassembly any part of the machine or human-behavior damage;
- (4). Not repaired by our serviceman.



**Biolab Scientific Ltd.**

3660 Midland Avenue, Suite 300, Toronto, Ontario M1V 0B8, Canada  
Email: [info@biolabscientific.com](mailto:info@biolabscientific.com) | Website: [www.biolabscientific.com](http://www.biolabscientific.com)