

Operation Manual



BCMI-502

Mini Centrifuge

Thank you for Choosing Biolab products. Please read the “Operating Instructions” and “Warranty” before operating this unit to assure proper operation.

Index

1. Introduction03

2. Operation guide03

3. Operation06

4. Maintenance07

5. Failure and troubleshooting07

01 Introduction

Two types rotators are provided:

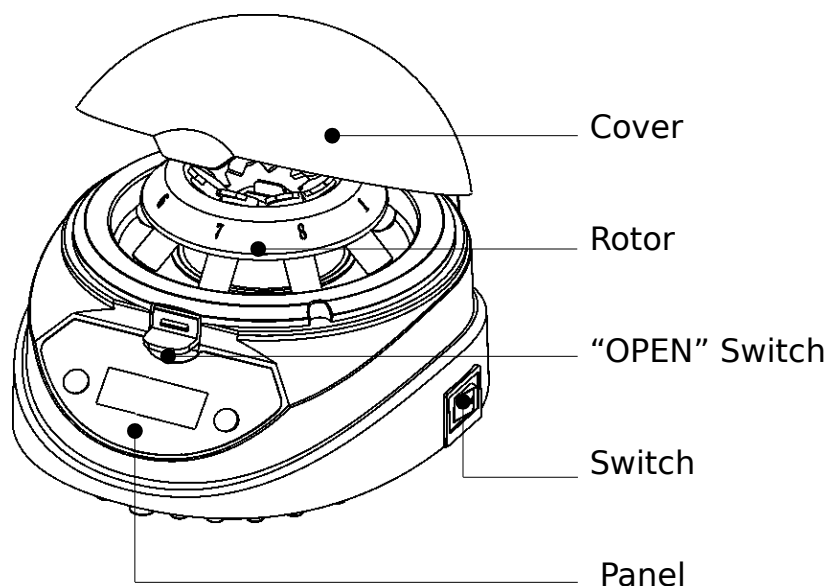
1) 8 x 1.5ml rotator (Suit for 1.5ml/2.0ml x 8 tubes. Additional 0.2ml and 0.5ml tube suit. 0.2ml and 0.5ml tube are adapted with the tube suit.)

2) 2 x 8 x 0.2 ml rotator (Suit for 0.2ml x 8 PCR tubes, 2 ranks supplied.)

Both the two types rotators can be used in extracting the supernatant from a variety of samples, separation of trace blood cells, rapid subsidence of samples, experimental division centrifugal and etc.

02 Operation Guide

2.1 Structure



Packing List

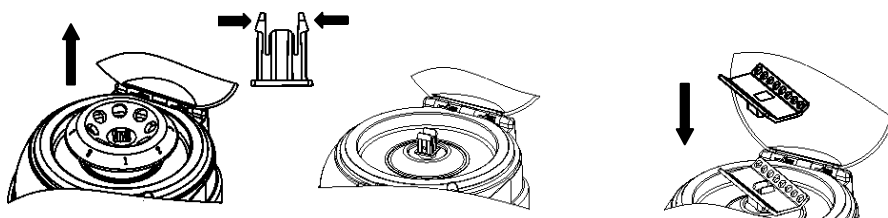
| Item | Description | Type | Qty | Remarks |
|------|------------------------|-----------------|-----|---------|
| 1 | Mini Centrifuge | BCMI-502 | 1 | |
| 2 | Power Line | 220V/110V 1A | 1 | |

| | | | | |
|------------------------|----------------------------|----------------|---|--|
| 3 | Performance Test Statement | | 1 | |
| 4 | Operation Manual | | 1 | |
| 5 | Warranty Card | | 1 | |
| Charger : (Sign/Stamp) | | Packing Date : | | |

Performance Test Statement

| | | | |
|-------------|------------------------|-------------------------|------------------------------------|
| Name | Mini Centrifuge | Type | BCMI-502 |
| Test Date | | Production No. | |
| No. | Test Content | Standard | Test Results |
| 1 | Speed | 3800~4900 rpm | <input type="checkbox"/> Qualified |
| 2 | Basic Function | Valid | <input type="checkbox"/> Qualified |
| 3 | Appearance Demand | Valid | <input type="checkbox"/> Qualified |
| 4 | Appearance Sign | Valid | <input type="checkbox"/> Qualified |
| 5 | Continuous Work Test | 30 minutes no irregular | <input type="checkbox"/> Qualified |
| Test Result | | | |
| Remarks : | | | |
| Tester : | | Confirmer : | |

2.2 Rotor Replacement



2.3 Keyboard and Display Panel







2.4 Key Function

Adjust setting time. Keep pressing to set timing quickly.
Maximum timing is 9999min. Timing range is from 1sec to 9999min.

2.5 Operation Guide

1. Time Setting

- a. Turn on the switch. The device enter into initial interface. LCD display “88 888” with beep alarm.
- b. After 2 seconds, LCD display the setting time in last operation.
- c. Press  or  of time key to increase or decrease the timing value. Keep pressing make the value increase or decrease tens or hundreds times.
- d. Keep pressing  and  of timing key around 6 seconds to change time unit. The indicator light of “Minute” on means the time unit is minute, the indicator light of “Minute” off means the time unit is second.
- e. LCD display 0000 stands for time setting function shut off.

03 Operation

a. Turn the switch to the side of “I”, set the time and speed according to the above operation guide. Close the cover with a clattered, the device begins operating. When the operation completes, press the open button after the rotor fully stopped. If the operation is needed to stop during the operating, please turn the switch to the side of “O”.

| | |
|----------------------------------|-------------------|
| Dimension: 175X155X118 (mm) | Power: $\leq 45W$ |
| Power Input: AC110/220V, 50/60Hz | Fuse: 0.5A /1.0A |
| G Force (RCF): 1200 g | Speed: 4000rpm |
| G Force (RCF): 3000 g | Speed: 6000rpm |
| G Force (RCF): 3400 g | Speed: 7000rpm |
| G Force (RCF): 7500 g | Speed: 10000rpm |

WARNING:

1. Do not open the cover unless the rotor is fully stopped.
2. The sample in the tube and the tubes should be put in balance. Each tube with sample should never be over 3.0g.
3. If loud noise or heavy vibrating, stop operating at once.
4. Forbidden to use different capacity tubes in one operation when use the rotor for 6X1.5ml tubes.

3. Notice

1. Forbidden to operate without any rotor.
2. Forbidden to put sample into the tube which is fixed in the rotor.
3. Forbidden to move the device in operation.
4. The device must be put onto a level and stable platform.

04 Maintenance

Use mull with non-corrosive cleansing fluid (PH=7±1) to clean surface of the instrument. Operate the instrument after it dry out. Do not dip the instrument into fluid or water it.

05 Failure Analysis and Troubleshooting

| Phenomenon | Possible Causes | Processing Procedure |
|--|---|---|
| Rotor not work when power on | Power line problem | Check the power line |
| | No power | Check power situation |
| | Broken switch | Change the switch |
| | Cover is not closed well | Close the cover well again |
| | Fuse blowout | Exchange it or ask technician for help |
| Noisy and vibrate heavily when running | Working table is not stable | Put instrument to a stable and firm working stable |
| | Rotor is not properly installed | Install the rotor according to manual guide 3.2 |
| | Tubes are not balanced | Place the tubes in balanced place |
| | Sample level is too much different | Put same volume sample in each tube |
| | Tube lid is not covered well, sample poured out when centrifuge working | Put same volume sample in each tube and cover the lid well. |
| | Rotor aged or partial defected | Change the rotor |
| | Different types of tubes mixing up | Use the same type of tube centrifuge at the same time |
| | Rotor cover deformed or cracked | Maintain in daily using. Exchange the cover if damaged. |



BIOLAB SCIENTIFIC LTD.

3660 Midland Avenue, Suite 300, Toronto, Ontario M1V 0B8 Canada

Email: contact@biolabscientific.com Tel: +1 707 533 1445

Website: www.biolabscientific.com