



ORBITAL SHAKER BSOT-1603

ORBITAL SHAKER BSOT-1603

ORBITAL SHAKER

This instruments high-end brand, specialized in providing general lab equipment like high performance dry oven, vacuum oven, CO2 incubator, low temp. incubator, thermostat incubator, constant humidity chamber, drug stabilization chamber, shaker, orbital shaker etc. Devote to provide user intelligent, professional, humanized lab instruments, which meets modern laboratory high end application.



Adopt single-axis drive and balancing technology, smooth running, low consumption and low noise.

Micro-computer control frequency and time, built in power off protection, it can resume work after normal power supply.

Large LCD screen can display frequency and time, menu operate interface, easily to understand.

24V DC control guaranty safety use.

Brushless DC motor, large start torque, wide speed adjustment, free maintenance.

Adjustable motor start-up torque to avoid overload samples that can not start the instrument.

Vibration imbalance detection. When shaker vibrates fiercely, the instrument stops automatically and smoothly.

SPECIFICATIONS

Model	BSOT-1603
Speed range	40 - 300rpm
Frequency accuracy	±1rpm
Amplitude	20mm
Max loading capacity	9000ml
Display	LCD screen
Timer	1 - 99h59min
Platform sizes (mm)	450x450
Overall size WxDxH (mm)	490x605x137
Rated power	60W
N.W	40 Kg
Power requirement	AC220V/50Hz
Standard configuration	250mlx18pcs
Packing Dimension	-
CBM	-
Net Weight	34.00
Gross weight	58
Alt Name	Orbital Shaker



ACCESSORIES FOR PURCHASE

No	Name
1	Spring wire rack
2	Universal attachment
3	Cell culture spring rack

4	Flask clamp
5	Rubber mat
6	Tube rack
7	Universal platform
8	Sticky pad



FEATURES

Adopt single-axis drive and balancing technology, smooth running, low consumption and low noise.

Micro-computer control frequency and time, built in power off protection, it can resume work after normal power supply.

Large LCD screen can display frequency and time, menu operate interface, easily to understand.

24V DC control guaranty safety use.

Brushless DC motor, large start torque, wide speed adjustment, free maintenance.

Adjustable motor start-up torque to avoid overload samples that can not start the instrument.

Vibration imbalance detection. When shaker vibrates fiercely, the instrument stops automatically and smoothly.

Many kinds of clamps and racks for selection, and the change of these parts are very easily, improve work efficient.

Programmable controller can simplified the experiment process, realize automatically control and running.

RS-232 and USB can be selected one of them, connect with computer, instruments can be monitored the time, alarm and rotation speed.

Safety:

Protection on key components: Key components have over current, over temp, over load etc. safety protection, it can prevent instruments accidents without precautions.

Breakdown message provided: When the instrument breakdown, the breakdown messages show on the screen to help operator easily check.

Intelligent:

Colorful touch screen or LCD controller, menu type operation interface makes operation simple and easily.

With preset start, standby and end function.

Multi phase temp. speed, time and heating etc parameters can be set and programmable at the same time, simplified complicated experiments process.

With App running control and monitoring function.

Profession:

Adopt international standard DIN-12880-2007 test and manufacturing.

Offer temp. shake speed, timer control and working chamber temperature is uniform.

Observe the samples through glass windows, which would not affect working chamber temperature.

Shake speed can be controlled to ensure liquid won't be out to damage the instruments.

Uninterrupted running: Low heat DC motor, large start torque, wide speed adjustment, free maintenance.

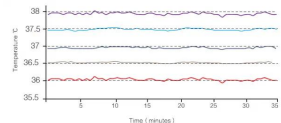
Colorful intelligent touch screen



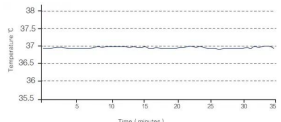
LCD screen controller professional type



Precise temperature control



Shaker inner chamber temp. uniformity $\leq \pm 1$ degree C to ensure all samples temp. are uniform.
 Note: Temp. accuracy and uniformity should be tested in stable status.



Shaker inside chamber temp. accuracy is ± 0.1 Degree C , ensure the experiment is stable.

APPLICATIONS

Orbital shaker controls the orbital movements frequency to make material dissolution, liquid mixing, microbial culture and plant tissue culture circulate in an experimental container. It is widely used in plants incubate, fermentation, hybridization, bacterial culture, biochemical reactions, enzyme and tissue research or small production of biological samples.

MORE INFO

Flask clamp placement diagram



50ml*49pcs



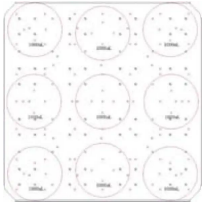
100ml*36pcs



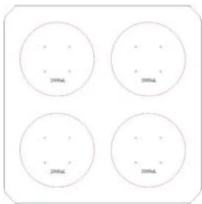
250ml*18pcs



500ml*16pcs



1000ml*9pcs



2000ml*4pcs

Model	BS3
Universal Platform WxD(mm)	
250x250	
350x350	
450x450	yes
Spring Wire Rack WxD(mm)	
250x250	
350x350	
450x450	yes
Universal Attachment WxDxH(mm)	
250x250x85	
350x350x100	
450x450x100	yes
Cell Culture Spring Rack WxD(mm)	
250x250	
350x350	
450x450	yes
Rubber Mat WxD(mm)	
250x250	
350x350	
450x450	yes
Individual Flask Clamps (ml)	
50ml	49
100ml	36
250ml	18
500ml	16

1000ml	9
2000ml	4
Test Tube Rack	
Φ8mmx105	
Φ10mmx72	
Φ12mmx72	
Φ14mmx42	
Φ17mmx26	4
Φ25mmx14	
Φ30mmx12	
Φ35mmx10	
Φ50mmx4	
Sticky Pad WxD(mm)	
140x140	9



Biolab Scientific Ltd.

Trillium Executive Center, East Tower, 675 Cochrane Dr, Markham, Ontario L3R 0B8, Canada

Email: info@biolabscientific.com | Website: www.biolabscientific.com