



BENCHTOP SHAKING INCUBATOR BSBT-1702

BENCHTOP SHAKING INCUBATOR BSBT-1702

SHAKER INCUBATOR

This instruments high-end brand, specialized in providing general lab equipment like high performance dry oven, vacuum oven, CO2 incubator, low temp. incubator, thermostat incubator, constant humidity chamber, drug stabilization chamber, shaker, orbital shaker etc. Devote to provide user intelligent, professional, humanized lab instruments, which meets modern laboratory high end application.



Intelligent:

Colorful touch screen or LCD controller, menu type operation interface makes operation simple and easily.

With preset start, standby and end function.

Multi phase temp. speed, time and heating etc parameters can be set and programmable at the same time, simplified complicated experiments process.

With App running control and monitoring function.

Profession:

Adopt international standard DIN-12880-2007 test and manufacturing.

Offer temp. shake speed, timer control and working chamber temperature is uniform.

Observe the samples through glass windows, which would not affect working chambe

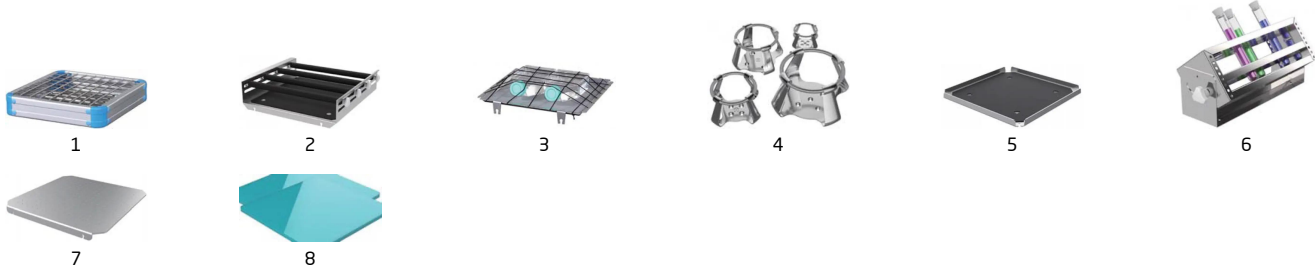
SPECIFICATIONS

Model	BSBT-1702
Temp. range	RT+5 - 65°C
Temp. control accuracy	0.1°C
Speed range	
Frequency accuracy	±1rpm
Platform size (mm)	350x350
Inside height (mm)	265
Overall size WxDxH (mm)	490x690x450
N.W	42 Kg
Amplitude	20mm
Running time	1 - 99h59min
Power requirement	AC220V/50Hz
Rated power	650W
Standard configuration	250mlx13pcs
Packing Dimension	79*65*65
CBM	0.33
Net Weight	40.00
Gross weight	62
Alt Name	Shaker Incubator

ACCESSORIES FOR PURCHASE

No	Name
1	Spring wire rack
2	Universal attachment
3	Cell culture spring rack
4	Flask clamp
5	Rubber mat
6	Tube rack

7	Universal platform
8	Sticky pad



FEATURES

Intelligent:

Colorful touch screen or LCD controller, menu type operation interface makes operation simple and easily.

With preset start, standby and end function.

Multi phase temp. speed, time and heating etc parameters can be set and programmable at the same time, simplified complicated experiments process.

With App running control and monitoring function.

Profession:

Adopt international standard DIN-12880-2007 test and manufacturing.

Offer temp. shake speed, timer control and working chamber temperature is uniform.

Observe the samples through glass windows, which would not affect working chamber temperature.

Shake speed can be controlled to ensure liquid won't be out to damage the instruments.

Uninterrupted running: Low heat DC motor, large start torque, wide speed adjustment, free maintenance.

Technical breakthroughs:

Unique air flow technology

- Adopts continuous flow fan technology, air stability, no turbulence, temperature is uniform.
- Cycle fan speed can be automatically controlled, it can avoid the samples volatile too fast due to cycle fan is too fast.

Patented single-axis drive technology

- Patented single-axis drive and balancing technology, running stable, low noise and low consumption.

Pneumatic support technology

- Adopts pneumatic support, transparent cover height can be adjustable to any position, convenient the operation.

Large screen LCD display

- Colorful touch screen can continuously, accurately and real-time display temp, rotation speed and work time. The menu operation interface is easy to understand.

Humanization design:

Combine incubator, shaker functions together with small space.

Patented overall design, transparent big view windows, dynamic master the culture effect.

With reserve test hole, outer sensors can access to test the inner cabinet temperature (option)

Shaking platform and chamber are made of stainless steel, anti-corrosion and easy to clean.

Standard configuration is universal clamp, it can used for different vessel with different volume.

Interrupted performance guaranty:

Brushless DC motor, large start torque, wide speed adjustment, free maintenance.

Safety:

Protection on instruments: Comply international standard secondary temp. limiter alarm system, alert the operator with sound and light alarms, ensure operator is safe without any accident.

Protection on key components: Key components have over current, over temp., over load etc safety protection, it can prevent

instruments accidents without precautions.

Protection on samples: Working chamber temperature higher or lower the set temp., alarm starter cut down the heater, alert the operator with sound and light alarms.

Protection on operator: Cabinet and door is special designed for insulation, low heat of cabinet body, ensure operator use instrument without burnt.

Breakdown message provided: When the instrument breakdown, the breakdown messages show on the screen to help operator easily check.

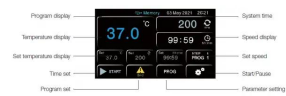
Convenient data process:

Equip with USB as options, record temp. parameter changes (option)

Equip with RS232 data interface, through software to remote control machine performance (option)

Above two options can be selected only one.

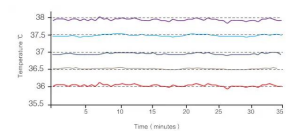
Colorful intelligent touch screen



LCD screen controller professional type

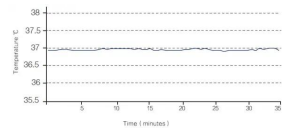


Precise temperature control



Shaker inner chamber temp. uniformity $\leq \pm 1$ degree C to ensure all samples temp. are uniform.

Note: Temp. accuracy and uniformity should be tested in stable status.



Shaker inside chamber temp. accuracy is ± 0.1 Degree C, ensure the experiment is stable.

APPLICATIONS

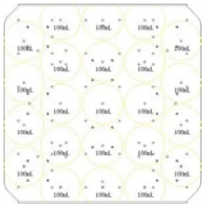
Shaker incubator combines incubator and shaker functions together, it provides accurate temp. control, realizes shake incubating and meet bacterium, microbe suspension incubate requirements. It is ideal instrument for Cell culture, fermentation, biochemistry, water quality analysis, plant cultivation and breeding.

MORE INFO

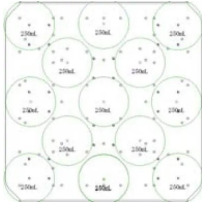
Flask clamp placement diagram



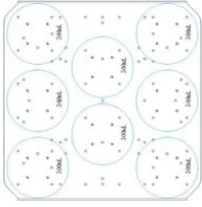
50ml*36pcs



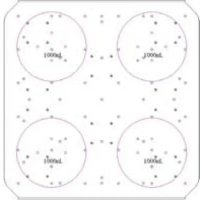
100ml*23pcs



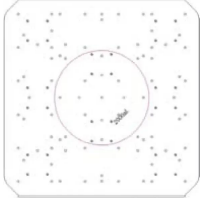
250ml*13pcs



500ml*8pcs



1000ml*4pcs



2000ml*1pcs

Model	BSI2
Universal Platform WxD(mm)	
250x250	
350x350	yes
450x450	
Spring Wire Rack WxD(mm)	
250x250	
350x350	yes
450x450	
Universal Attachment WxDxH(mm)	
250x250x85	
350x350x100	yes

450x450x100	
Cell Culture Spring Rack WxD(mm)	
250x250	
350x350	yes
450x450	
Rubber Mat WxD(mm)	
250x250	
350x350	yes
450x450	
Individual Flask Clamps (ml)	
50ml	36
100ml	23
250ml	13
500ml	8
1000ml	4
2000ml	-
Test Tube Rack	
Φ8mmx105	
Φ10mmx72	
Φ12mmx72	
Φ14mmx42	
Φ17mmx26	3
Φ25mmx14	
Φ30mmx12	
Φ35mmx10	
Φ50mmx4	
Sticky Pad WxD(mm)	
140x140	4



Biolab Scientific Ltd.

Trillium Executive Center, East Tower, 675 Cochrane Dr, Markham, Ontario L3R 0B8, Canada

Email: info@biolabscientific.com | Website: www.biolabscientific.com