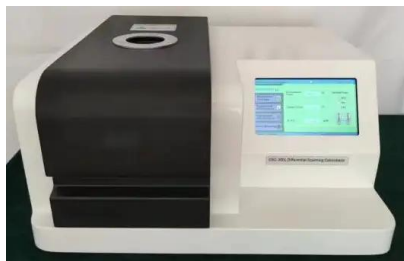


COLORIMETER BHJ1C1

COLORIMETER BHJ1C1

DIFFERENTIAL SCANNING CALORIMETER

The DSC is a touch screen type, which can be used for glass transition temperature test, phase transition test, melting and enthalpy test, product stability and oxidation induction period test. Wide range of application.



1. Industrial grade 7-inch touch screen with rich display information.
 2. New metal furnace structure, better baseline and higher accuracy. Indirect conduction mode is adopted for heating, which has high uniformity and stability, reduces pulse radiation, and is superior to the traditional heating mode.
 3. USB communication interface has strong universality, reliable and uninterrupted communication, and supports self recovery connection function.
 4. Automatic switching of two-way atmosphere flow, fast switching speed and short stability time. At the same time, one protective gas input is added.
 5. The software is simple and easy to operate.
- Furnace structure
Melting point, heat enthalpy, phase change temperature analysis :

SPECIFICATIONS

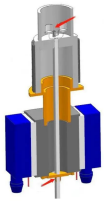
| | |
|----------------------------|---|
| Model | BHJ1C1 |
| Temperature range | -40°C ~ 600°C |
| Temperature resolution | 0.01°C |
| Temperature fluctuation | ±0.01°C |
| Temperature repeatability | ±0.1°C |
| Heating rate | 0.1 ~ 100°C/min |
| Cooling rate | 0.1 ~ 20°C/min |
| Constant temperature time | Program setting ≤ 24h |
| Curve scanning | Heating scan, Cooling scan |
| DSC range | 0 ~ ±800 mW |
| DSC resolution | 0.01 μW |
| DSC accuracy | 0.001 mW |
| Temperature control mode | Heating, constant temperature, and cooling |
| Working power supply | AC 220V 50Hz or customized |
| Atmosphere control gas | Nitrogen, oxygen (instrument automatic switch) |
| Gas flow | 0 ~ 300 mL/min |
| Gas pressure | 0.3 MPa |
| Display mode | 24-bit color, 7-inch LCD touch screen display |
| Data interface | Standard USB interface |
| Parameter standard | Equipped with reference materials (indium, tin, lead) - user can correct temperature manually |
| Thermocouple configuration | Multiple thermocouples: one for sample temperature, one for instrument internal ambient temperature |
| Alt Name | Differential scanning calorimeter |

FEATURES

1. Industrial grade 7-inch touch screen with rich display information.
2. New metal furnace structure, better baseline and higher accuracy. Indirect conduction mode is adopted for heating, which has high uniformity and stability, reduces pulse radiation, and is superior to the traditional heating mode.
3. USB communication interface has strong universality, reliable and uninterrupted communication, and supports self recovery connection function.
4. Automatic switching of two-way atmosphere flow, fast switching speed and short stability time. At the same time, one protective

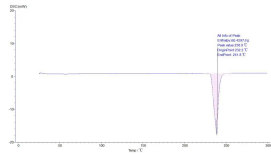
gas input is added.

5. The software is simple and easy to operate.

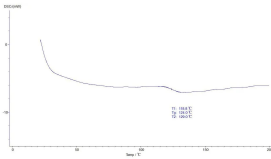


Furnace structure

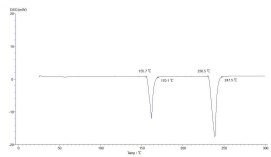
Melting point, heat enthalpy, phase change temperature analysis :



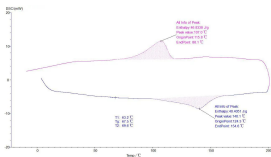
Glass analysis:



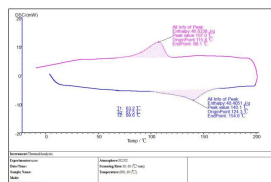
Initial melting point, final melting point analysis:



Analysis of two or more section lifting temperatures:



Test report:



Biolab Scientific Ltd.

Trillium Executive Center, East Tower, 675 Cochrane Dr, Markham, Ontario L3R 0B8, Canada

Email: info@biolabscientific.com | Website: www.biolabscientific.com