



LABORATORY LOW SPEED CENTRIFUGE BFH1F4

LABORATORY LOW SPEED CENTRIFUGE BFH1F4

VACUUM CENTRIFUGAL CONCENTRATOR



1. High-definition LCD touch screen, simultaneously displaying operational parameters: speed, temperature, vacuum, and running time.
2. Delayed start: after reaching a fixed speed, Start the vacuum pump to effectively prevent sample mixing.
3. Fully automatic vacuum control system, vacuum setting range 0.1~1000mbar, Control accuracy 0.1mbar.
4. 1.5/2ml Rotor stacking for simultaneous use; rotor replacement without tools.
5. Programmable with temperature and pressure settings; capable of storing 36 programs.
6. Compatible with various rotor heads; transparent glass window for easy observation.
7. Magnetic drive: maintenance-free, non-contact drive, fully sealed.

SPECIFICATIONS

Model	BFH1F4
Temp. Range	-10°C~+100°C
Temp. Accuracy	±1°C
Max. Speed	2500rpm
Max. Capacity	12x100ml
Timer	0~99h59min
Vacuum Control Range	0.1~1000mbar
Main unit withstands vacuum levels	0.01mbar
Noise	≤68dBA
Power	0.9kw
Power supply	220v,50Hz
Dimension(LxWxHmm)	540*653*420mm
Alt Name	Vacuum centrifugal concentrator



ACCESSORIES FOR PURCHASE

No	Name	Cold Trap Solvent	Cold Trap Temp.	Description
1	Cold trap	2L	-50°C	The evaporation rate is influenced not only by the energy input but also by the pumping speed of the vacuum pump. The main factor affecting the efficiency of the vacuum pump is the large evaporative surface area of the sample, rather than the sample quantity or volume. To reduce evaporation time, we recommend using a cold trap in conjunction with centrifugal concentration. This not only helps in condensing water vapor but also increases the vapor density of organic solvents, making it easier for condensation to occur.



1



1



1

No	Name	Rotor Type	Rotor Volume
1	Rotor	Angle Rotor	42x1.5/2ml
2	Rotor	Angle Rotor	108x1.5/2ml
3	Rotor	Angle Rotor	48x5ml
4	Rotor	Angle Rotor	30x10ml
5	Rotor	Angle Rotor	24x15ml
6	Rotor	Angle Rotor	8x50ml
7	Rotor	Angle Rotor	6x100ml
8	Rotor	Angle Rotor	16*20ml Sample vial
9	Rotor	Angle Rotor	16*5ml+8*4ml+8*3ml
10	Rotor	Microplate Rotor	2x96 well



2



5



6



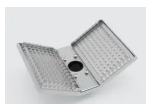
7



8



9



10

No	Name	Description
1	Vacuum Pump	Oil pump (standard configuration)
2	Vacuum Pump	Chemical corrosion-resistant diaphragm pump (optional)
3	Vacuum Pump	Chemical corrosion-resistant hybrid pump (optional)



1



2



3

FEATURES

1. High-definition LCD touch screen, simul-taneously displaying operational parameters: speed, temperature, vacuum, and running time.
2. Delayed start: after reaching a fixed speed, Start the vacuum pump to effectively prevent sample mixing.
3. Fully automatic vacuum control system, vacuum setting range 0.1~1000mbar, Control accuracy 0.1mbar.
4. 1.5/2ml Rotor stacking for simultaneous use; rotor replacement without tools.
5. Programmable with temperature and pressure settings; capable of storing 36 programs.
6. Compatible with various rotor heads; transparent glass window for easy observation.
7. Magnetic drive: maintenance-free, non-contact drive, fully sealed.
8. Safety in use: inductive electric self-suction door lock ensures the centrifugal concentrator can only start when the door cover is fully closed and locked.
9. Can be used in conjunction with freeze-drying systems.



Biolab Scientific Ltd.

Trillium Executive Center, East Tower, 675 Cochrane Dr, Markham, Ontario L3R 0B8, Canada
Email: info@biolabscientific.com | Website: www.biolabscientific.com