



## MANUAL SOLID PHASE EXTRACTION SYSTEM BFA1DE1 (BSPE-104)

# MANUAL SOLID PHASE EXTRACTION SYSTEM BFA1DE1

## SOLID PHASE EXTRACTION INSTRUMENT

Solid phase extraction instrument Solid phase extraction (SPE) is a widely used and popular sample pretreatment instrument. The instrument used solid adsorbent to adsorb the target compounds in the liquid sample and separate them from the matrix and interfering compounds of the sample. Then it is eluted with eluent or desorbed by heating to achieve the purpose of separating and enriching the target compounds. Solid phase extraction instruments are widely used in environmental water quality analysis, food safety analysis, pharmaceutical analysis, bioengineering and other fields.



Good sealing, high consistency, anti-cross pollution and anti-atomization vacuum tank design.

Simple and rapid operation; no phase separation; easy to collect analysis components and process small sample.

Can be equipped with large-capacity collection containers, can process samples in batches or can process samples individually.

The vacuum tank is made of extra hard thick PC material, and its wall thickness is uniform, which can withstand high negative pressure above -0.08Mpa.

The internal test tube racks are made of high polymer materials, which are beautiful and corrosion resistant and will not be deformed under high pressure for long-term use.

The liquid circuit switch adopts high-quality valves, each valve independent control

## SPECIFICATIONS

Model	BFA1DE1
Old Model	BSPE-104
Handling sample type and quantity	10mm tube X1212mm tube X1215mm tube X12
Vacuum degree	$\leq -0.08\text{Mpa}$
Vacuum tank internal dimensions	215x57x140mm
Dimension	W.280xD.150xH.214mm
Net Weight	2.8kgs
Alt Name	Solid Phase Extraction Instrument

## FEATURES

Good sealing, high consistency, anti-cross pollution and anti-atomization vacuum tank design.

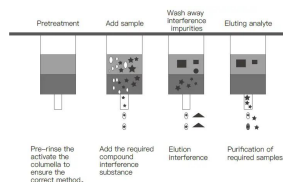
Simple and rapid operation; no phase separation; easy to collect analysis components and process small sample.

Can be equipped with large-capacity collection containers, can process samples in batches or can process samples individually.

The vacuum tank is made of extra hard thick PC material, and its wall thickness is uniform, which can withstand high negative pressure above -0.08Mpa.

The internal test tube racks are made of high polymer materials, which are beautiful and corrosion resistant and will not be deformed under high pressure for long-term use.

The liquid circuit switch adopts high-quality valves, each valve independent control, durable and easy to operate.





**Biolab Scientific Ltd.**

Trillium Executive Center, East Tower, 675 Cochrane Dr, Markham, Ontario L3R 0B8, Canada  
Email: [info@biolabscientific.com](mailto:info@biolabscientific.com) | Website: [www.biolabscientific.com](http://www.biolabscientific.com)