



## COLONOMETER BER1DK1 (BCLC-204)

# COLONOMETER BER1DK1

## COLONOMETER

It is a high-tech colony counter, known for its user-friendly functions and excellent ergonomics. It can accurately count all the culture media (culture dishes, filters) used in microbiology.

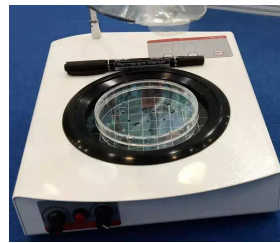
1. Place the petri dish on the pressure-sensitive glass surface, and you can use any felt-tip marker to press and count, and there will be a pleasant beep when counting, and the accumulated data will be displayed on the LED screen immediately. The touch sensitivity of the pressure sensor can be adjusted to adapt to different culture vessels and user habits. With the function of manually increasing or decreasing the counting button, the repeated counting or missing counting can be corrected during operation.
2. The internal LED lighting system is glare-free and the luminosity is adjustable, which makes the colony form a sharp contrast view to adapt to the difficult-to-observe microorganisms in the culture container. The grid size is moderate, which is convenient for accurate counting by blocks.
3. The large frameless magnifying glass (which can achieve magnification of 3 times or 9 times of observation and counting) and the unique upper light source compensation illumination make the microbial appear completely, and the counting operation to be much easier.



1. LED display cumulative number.
  2. Can be increased or decreased manually.
  3. Reset button for zero and re-count.
  1. Intuitive counting with tactile pressure beeps.
  2. LED long-life lamp, low heat and no wearing parts.
  3. Any felt-tip marker available.
  1. Adjustable LED side light source and dark background make colonies clearly visible.
  2. Grid size is moderate, which is convenient for accurate counting by blocks.
- Thoughtful design of the brightness and sensitivity adjustment knob for easy operation.
1. Pressure sensitivity adjustment knob.

## SPECIFICATIONS

Model	BER1DK1
Old Model	BCLC-204
Lighting	White LED array
Digital display	3-digit LED display
Counting range	0-999
Counting method	Pressure sensitive
Applicable petri dish	Ø50 Ø55 Ø60 Ø70 Ø90
Input voltage (Frequency)	AC 100-240V (50/60Hz)
Input power	20W
Magnification	3 times / 9 times
Protection class	IP21
Allowable relative humidity	80%
Allowable ambient temperature	5-50°C
Dimensions	255x210x160mm
Loupe size	Ø90mm / Ø20mm
Net weight	2.8Kg
Alt Name	Colonometer



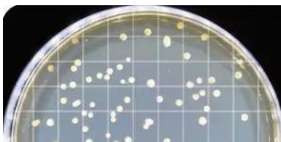
## FEATURES



1. LED display cumulative number.
2. Can be increased or decreased manually.
3. Reset button for zero and re-count.



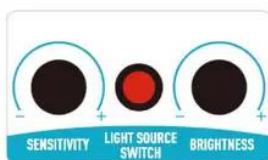
1. Intuitive counting with tactile pressure beeps.
2. LED long-life lamp, low heat and no wearing parts.
3. Any felt-tip marker available.



1. Adjustable LED side light source and dark background make colonies clearly visible.
2. Grid size is moderate, which is convenient for accurate counting by blocks.



Thoughtful design of the brightness and sensitivity adjustment knob for easy operation.



1. Pressure sensitivity adjustment knob.
2. LED main light source brightness adjustment knob.



Unique upper light source compensation lighting



1. Compensation light switch
2. 3 times zoom
3. 9 times zoom



**Biolab Scientific Ltd.**

Trillium Executive Center, East Tower, 675 Cochrane Dr, Markham, Ontario L3R 0B8, Canada  
Email: [info@biolabscientific.com](mailto:info@biolabscientific.com) | Website: [www.biolabscientific.com](http://www.biolabscientific.com)