



## ANIMAL WASTE WORKSTATION BEM1CN1

# ANIMAL WASTE WORKSTATION BEM1CN1

## ANIMAL LITTER WORKSTATION



Dual sensors: The working area is equipped with temperature and humidity sensors and airflow sensors, real-time monitoring of temperature, humidity and airflow changes in the working area.

Activated carbon filter: Add an activated carbon filter to the air outlet to absorb gaseous pollutants and reduce odor.

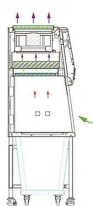
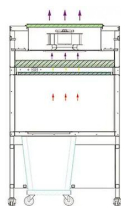
Large-capacity storage bucket: The large-capacity storage bucket is equipped with a lid and a mobile trolley, which is convenient for transportation.

LCD touch screen: Display the working time of the high-efficiency filter; realize the appointment timing of the fan and socket; display the working status in real time.

1. Use high-quality materials: the three side walls of the working area adopt high-quality 304 stainless steel integrated structure, and the internal cleanable

## SPECIFICATIONS

Model	BEM1CN1
Power Supply	AC220V, 50Hz(Standard); AC110V, 60Hz(Optional)
Instrument Size(L*D*H)	1100*700*1920mm
Operating Area Size(L*D*H)	1000*600*660mm
Laminar Airflow Velocity	≥0.35m/s
Noise	≤65dB(A)
Illuminance	≥1000lx
LED Lamp	12W*2
Consumption(W)	700W
Primary Filter Size	967*453*30mm*1
High Efficiency Filter Size	1000*485*69mm*1
Activated Carbon Filter Size	758*408*35mm*1
Filtration Efficiency	99.9995%(φ0.12μm)
Ambient Temperature	15°C~35°C
Relative Humidity	≤75%
Atmospheric Pressure Range	70 kPa~106 kPa
Package Size (L*D*H)	1250*850*2100mm
Gross Weight	240kg
Alt Name	Animal Litter Workstation



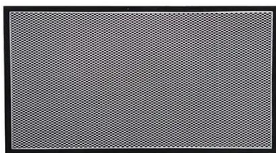
- Activated Carbon Filter
- ULPA Filter
- Primary Efficiency Filter
- Room Air
- Polluted Air
- Semi-Purified Air
- Purified Air

## FEATURES

**Dual sensors:** The working area is equipped with temperature and humidity sensors and airflow sensors, real-time monitoring of temperature, humidity and airflow changes in the working area.



**Activated carbon filter:** Add an activated carbon filter to the air outlet to absorb gaseous pollutants and reduce odor.



**Large-capacity storage bucket:** The large-capacity storage bucket is equipped with a lid and a mobile trolley, which is convenient for transportation.



**LCD touch screen:** Display the working time of the high-efficiency filter; realize the appointment timing of the fan and socket; display the working status in real time.



1. Use high-quality materials: the three side walls of the working area adopt high-quality 304 stainless steel integrated structure, and the internal cleanable parts adopt rounded corner design, leaving no dead corners and easy to clean.
2. Strong tolerance: the working area has a large opening, which can accommodate all common animal cages.
3. Control system: Control system: LCD touch screen design, real-time display of working status, easy to operate.
4. Ergonomic design: help reduce fatigue, improve work efficiency, and provide a safer working environment.

## APPLICATIONS

It is suitable for the treatment of animal litter in the SPF animal room, to prevent the pollutants generated when dumping the animal litter from harming the experimenters and the working environment, and to provide safety protection for the experimenters and the working environment.



**Biolab Scientific Ltd.**

Trillium Executive Center, East Tower, 675 Cochrane Dr, Markham, Ontario L3R 0B8, Canada

Email: [info@biolabscientific.com](mailto:info@biolabscientific.com) | Website: [www.biolabscientific.com](http://www.biolabscientific.com)